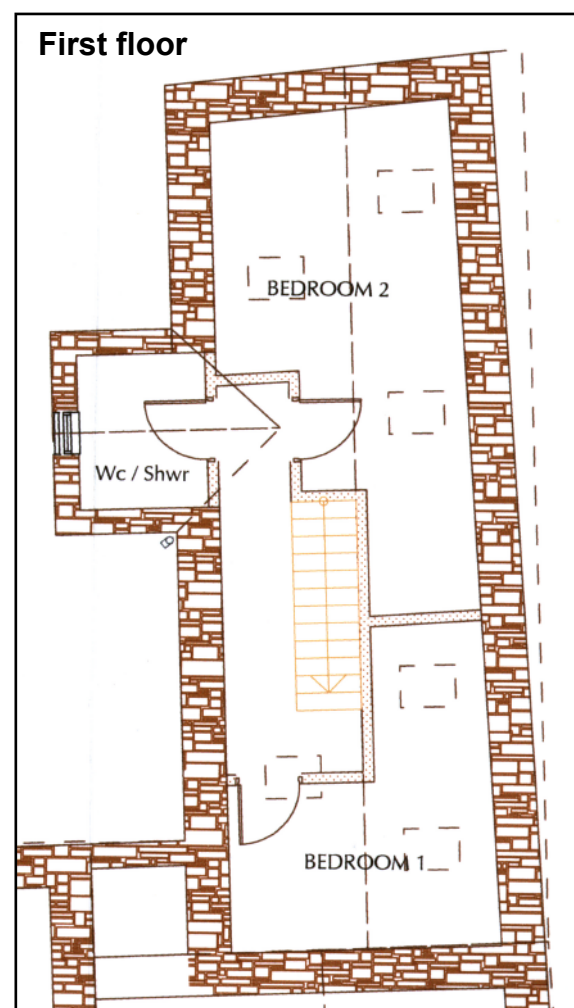
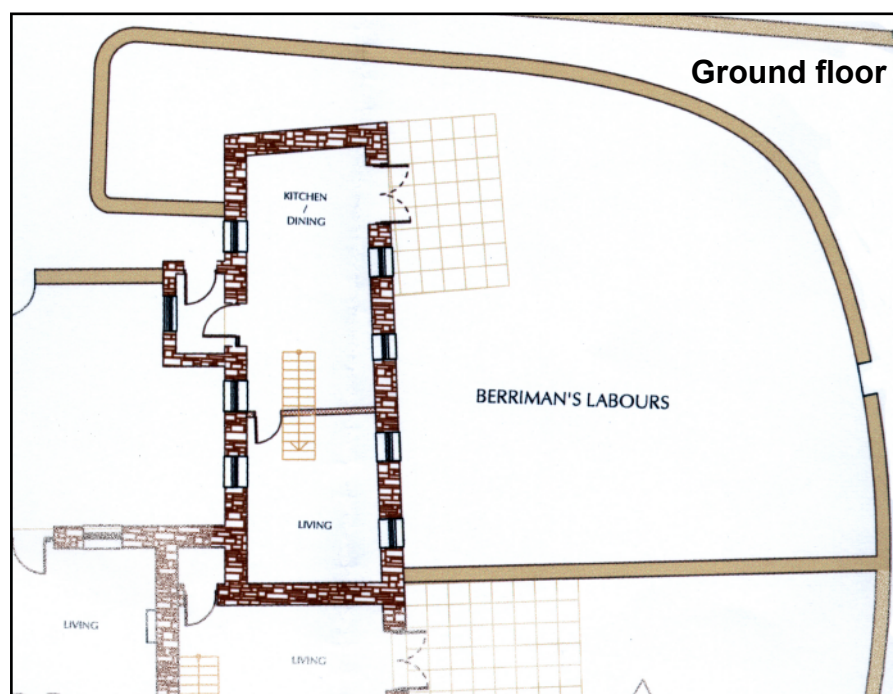


BERRIMAN'S LABOURS

TROWAN



ROOM	DIMENSIONS (max)
Kitchen / dining	7.2 x 3.4
Living	3.7 x 4.7
Bedroom 1	4.5 x 3.7
Bedroom 2	7.2 x 3.4

For further information, call Mango Homes on 01736 791 953 or visit our website: www.trowan.co.uk

mango
homes

The Berriman family was associated with the farm at Trowan for hundreds of years and eventually became the owners of the entire hamlet. This lovely building enjoys extensive sea views to the south and west. Inside, the cottages originally housed pigs on the ground floor producing warmth (and bacon) for the workers living upstairs. The original fireplace and some beautiful timber beams provide a perfect package.

As work is in progress, these particulars rely on our architect's drawings therefore accommodation and specifications may change. Dimensions are for guidance only and may vary in the completed cottage.