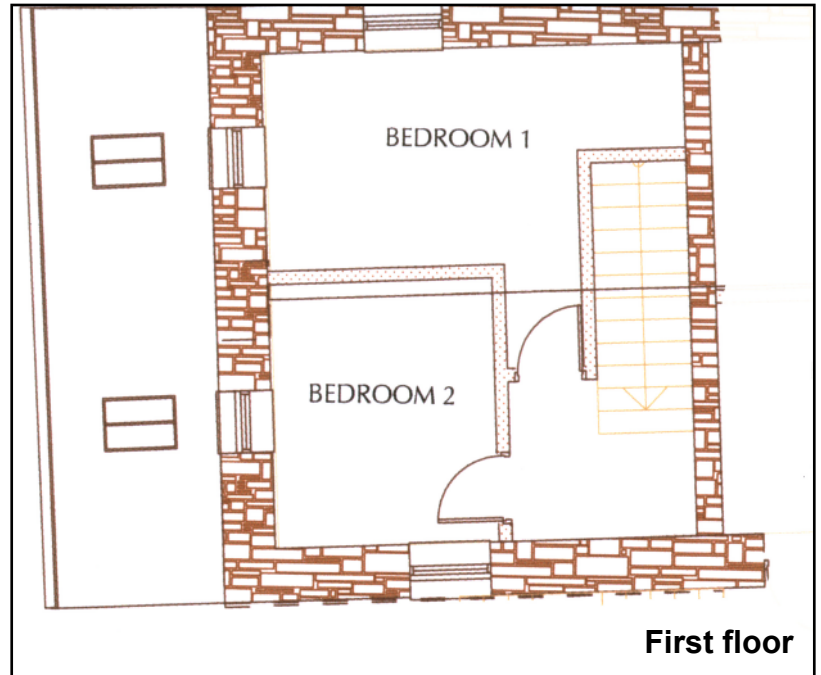
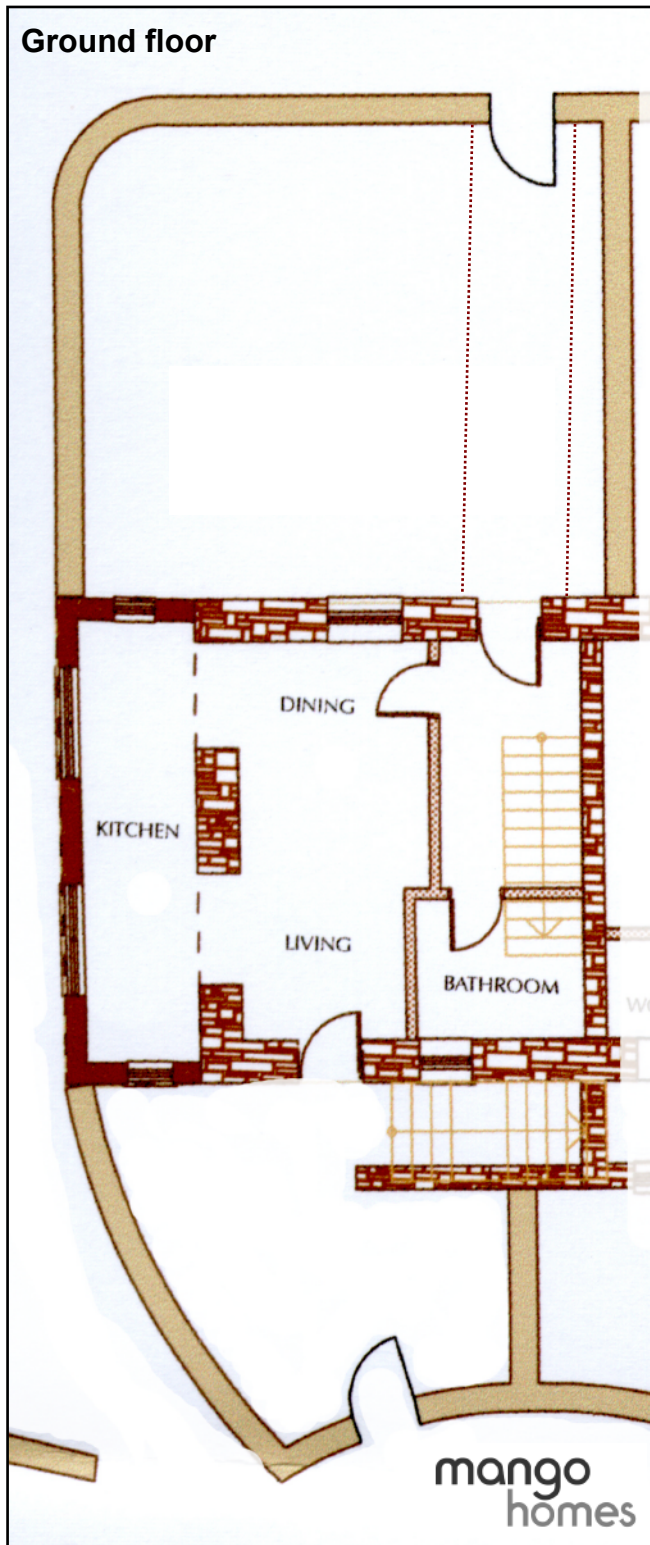


HOLLOW'S COTTAGE

TROWAN



Once a miners' cottage, then a milking parlour, Hollow's Cottage is named after Mark Hollow, a hard working man of the soil who toiled the land in the 1830's. This beautifully restored cottage is available with a walled paddock and enjoys long-range sea views. Internally there are former ships' timbers, exposed granite stonework and open fires.

ROOM	DIMENSIONS (max)	AREA m ²
Kitchen	6.3 x 1.7	10.7
Living / dining	5.6 x 2.7	15
Bedroom 1	4.9 x 2.5	-
Bedroom 2	3 x 2.6	7.8

For further information, call Mango Homes on 01736 791 953 or visit our website: www.trowan.co.uk

As work is in progress, these particulars rely on our architect's drawings therefore accommodation and specifications may change. Dimensions are for guidance only and may vary in the completed cottage.