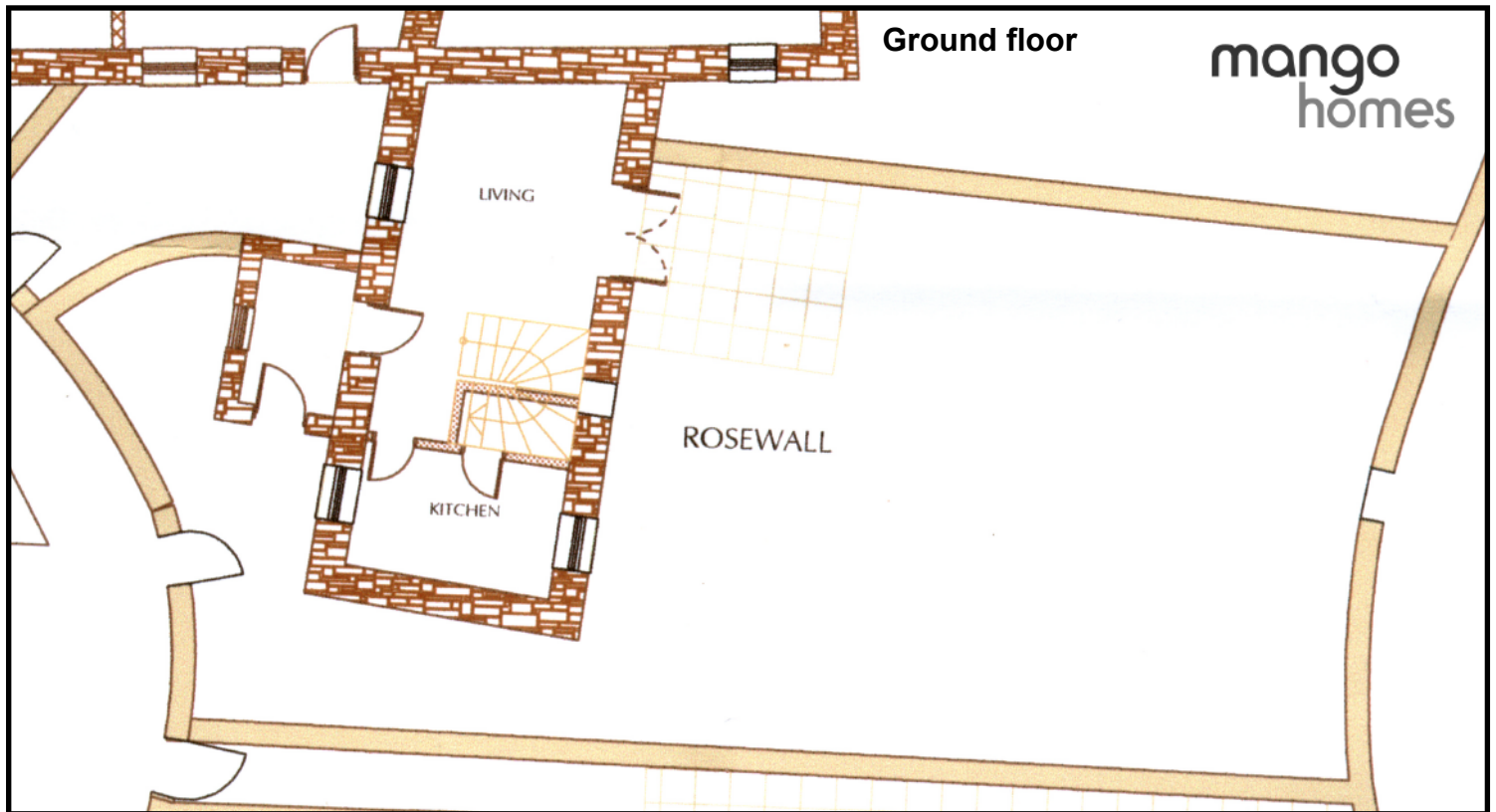


ROSEWALL

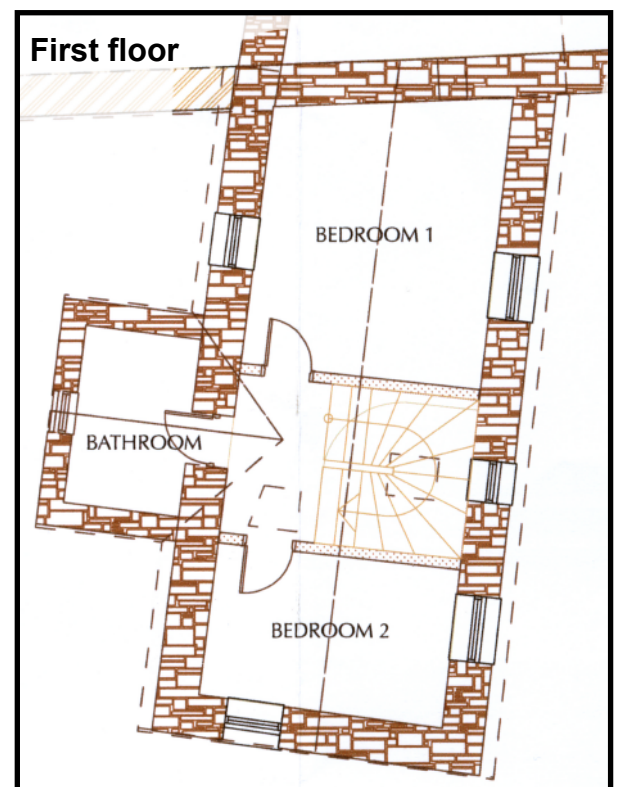
TROWAN



Named after George Rosewall, resident of Trowan in 1830, this former miners' cottage benefits from panoramic views across open countryside and the Atlantic Ocean. Internally the cottage has attractive exposed timbers and a wood burning stove. Outside, there is a walled garden with formal patio and two parking spaces.

ROOM	DIMENSIONS (max)	AREA m ²
Living room	4.4 x 3.4	-
Kitchen	2.3 x 3.5	8.1
Bedroom 1	4.2 x 3.4	-
Bedroom 2	3.5 x 2.3	8.1

For further information, call Mango Homes on 01736 791 953 or visit our website: www.trowan.co.uk



As work is in progress, these particulars rely on our architect's drawings therefore accommodation and specifications may change. Dimensions are for guidance only and may vary in the completed cottage.