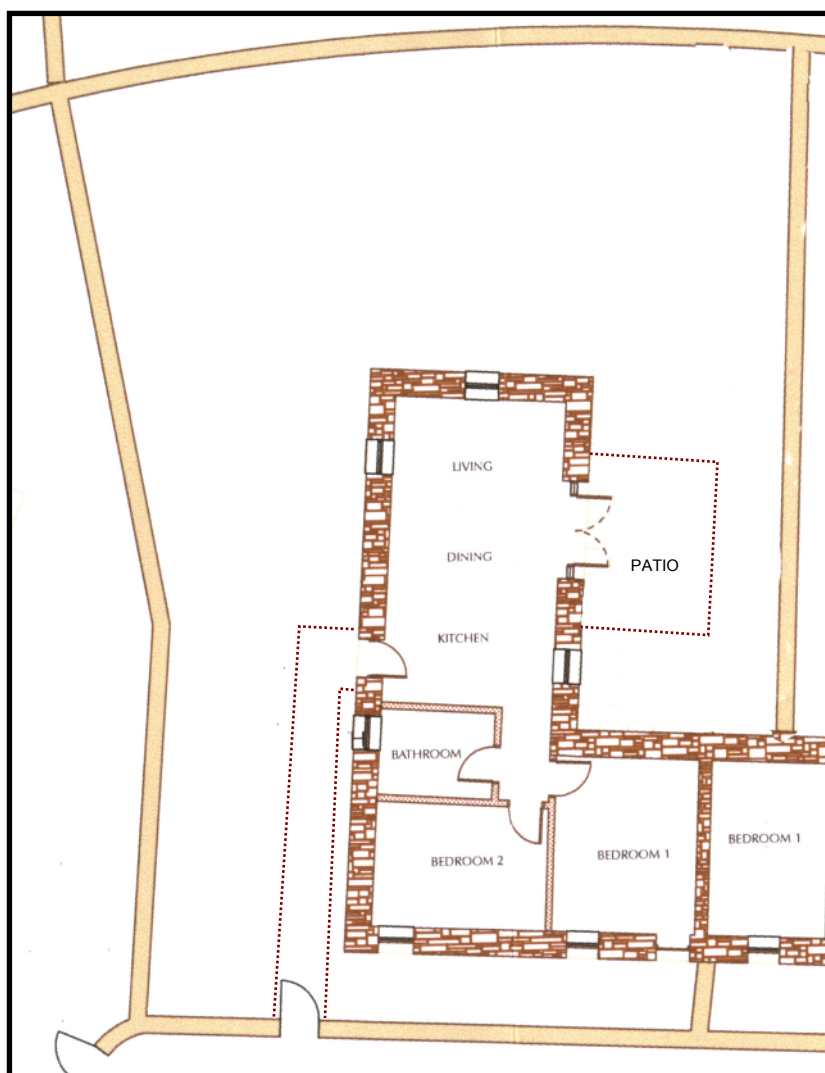


WEST TRENOUTH

TROWAN



mango
homes

This formerly modest one room blacksmith's cottage is to be extended in a traditional style to provide a two-bedroom dwelling with stunning views to the North, West and South. The living room benefits from a wood-burning stove and French doors opening onto a secluded patio and walled garden with superb views. There is the option of further land to the West by separate negotiation.

ROOM	DIMENSIONS (max)	AREA m ²
Kitchen / living	7 x 4	28
Bedroom 1	3.5 x 4	14
Bedroom 2	2.8 x 4	11

For further information, call Mango Homes on 01736 791 953 or visit our website: www.trowan.co.uk

As work is in progress, these particulars rely on our architect's drawings therefore accommodation and specifications may change. Dimensions are for guidance only and may vary in the completed cottage.